

# THERMOTHERAPY

## FANGOHEATER

The compact design as table model makes the unit suitable to be used in any kind of practice. It is possible to process Paraligno as well as Parafango Battaglia in the heater. Because of the direct heating system, the Fango heater is highly suitable for sterilising paraffin (at 135 °C)\*. The Fango heater is glass wool isolated and is delivered including a splash cover with cold grip.

\* = Sterilisation is only possible when Parafango Battaglia is used (Paraligno can't stand these high temperatures).



### 1468904 FANGOHEATER

#### TECHNICAL SPECIFICATIONS

|                           |                                                 |
|---------------------------|-------------------------------------------------|
| Mains voltage             | : 220 – 240 V, 50 – 60 Hz                       |
| Current consumption       | : 1200 W                                        |
| Range of thermostat       | : 0 – 100° C                                    |
| Sterilization temperature | : 135° C                                        |
| Safety device             | : automatic switch-off when overheated (160° C) |
| Capacity                  | : 15 l                                          |
| Dimensions                | : 37 x 37 x 41,5 cm                             |

#### STANDARD ACCESSORIES

|         |                              |
|---------|------------------------------|
| 1468751 | Operating manual fangoheater |
| 3444290 | Mains cable                  |

#### OPTIONAL ACCESSORIES

|         |                                                 |
|---------|-------------------------------------------------|
| 3448112 | Paraffin wax, pure form, 25 kg                  |
| 3448164 | Paraligno, 5 kg                                 |
| 3448108 | Parafango Battaglia, 12 kg                      |
| 3448137 | Parafoil, 40x60 cm, 1000 sheets                 |
| 3448136 | Heat-transfer liquid for the paraffin-bath, 5 l |

## PARAFFIN-BATH

The Enraf-Nonius paraffin bath operates on the "au-bain-marie" principle. The paraffin is heated directly by the heat transferred from a heat-transfer liquid. As heat-transfer liquid you can use a special thermal-oil (13 ltr). It is possible to heat Paraligno, Parafango and pure paraffin in this bath.



- Quicker heating and more even heat distribution
- Practically no temperature fluctuations in the paraffin
- Mobile
- Thermostatic temperature control (30-90 °C)
- Overheating safety mechanism

### 3448162 PARAFFIN-BATH 230V/50HZ 3448163 PARAFFIN-BATH 115V/60HZ

#### TECHNICAL SPECIFICATIONS

|                      |                                       |
|----------------------|---------------------------------------|
| Temperature range:   | 30-90°C                               |
| Internal dimensions: | 50x30x20 cm (30 l)                    |
| External dimensions: | 58x32x50 cm                           |
| Mains voltage:       | 220-240 V, 110-120 V, 50/60 Hz        |
| Power consumption:   | 2000 W (1400 W for the 115 V version) |

#### STANDARD ACCESSORIES

|         |                                |
|---------|--------------------------------|
| 1400005 | Operating manual Paraffin bath |
|---------|--------------------------------|



# PACKHEATER

The Packheater is used for heating packs. The enamelled heater is standard delivered including base grid. The water temperature is accurately maintained by a thermostat at a preselected, constant value.

## 3448191 PACKHEATER



- Table model
- Enamelled heater
- Thermostatic temperature control
- Watertemperature adjustable (50-95 °C)
- Content 29 litre

### TECHNICAL SPECIFICATIONS

|                    |                              |
|--------------------|------------------------------|
| Tank capacity:     | 29 l                         |
| Temperature range: | 50-100 °C                    |
| Mains voltage:     | 220-240 V                    |
| Frequency:         | 50/60 Hz                     |
| Power consumption: | 700 W                        |
| Dimensions:        | height 42 cm, diameter 35 cm |
| Weight:            | 7 kg                         |

### STANDAARD ACCESSOIRES

|         |             |
|---------|-------------|
| 1400725 | User manual |
|---------|-------------|

### OPTIONAL ACCESSORIES

|         |                                                  |
|---------|--------------------------------------------------|
| 3448135 | Base grid, plastic-coated                        |
| 3448199 | Rack, stainless steel                            |
| 3448132 | Tongs made of wood                               |
| 3448166 | Enno Moist 12x30 cm                              |
| 3448167 | Enno Moist 25x30 cm                              |
| 3448281 | Enno Moist 25x45 cm                              |
| 3448283 | Enno Moist 25x50 cm                              |
| 3448282 | Enno Moist 25x60 cm                              |
| 3448169 | Enno Moist oversize, 38x61 cm                    |
| 3448168 | Enno Moist neckmodel, 15x61 cm                   |
| 3448176 | Protective sleeve Enno Moist standard (25x30 cm) |
| 3448311 | Stadtholder Moorpacking 13x28 cm                 |
| 3448310 | Stadtholder Moorpacking 18x28 cm                 |
| 3448312 | Stadtholder Moorpacking 22x40 cm                 |
| 3448313 | Stadtholder Moorpacking 30x40 cm                 |
| 3448314 | Stadtholder Moorpacking neck-/shoulder model     |
| 3448209 | Hot/Cold packs 30x38 cm, 2 pieces                |
| 3448208 | Hot/Cold packs 13x30 cm, 6 pieces.               |
| 3448207 | Hot/Cold packs 13x14 cm, 12 pieces               |
| 3448130 | Towelling holder for 3 packs 3448208             |



### ENNO MOIST

Cotton pack filled with volcanic mineral grains.



### STADTHOLDER MOORPACK

Synthetic pack filled with 'moor'.

- Heat is released extremely slowly
- Can be heated in a microwave

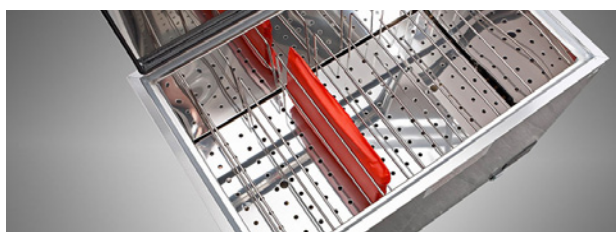


### HOT/COLDPACKS

Synthetic gel pack.



# PACKHEATERS (TYPE WB)



The packheaters are used for heating and keeping warm ('hot packs').

## Features

- High quality packheater
- With stainless steel insert grid (removable)
- Housing made of stainless steel with structured surface
- Top lid handle bar in red, blue, green, yellow or black
- Double isolated top lid \*
- Gas spring supported top lid \*
- Energy saving insulation
- Electronic temperature control with digital temperature display \*
- Protected against overheating
- Temperature measurement in the water
- Silicone heating element with large surface for a fast and consistent heating process
- Power On indicator lamp
- Heating indicator lamp
- Water outlet on the front side, ball valve 1/2"
- Medical device class I

\* = except for WB 4-30

The packheaters can be supplied with a mobile frame (optional), consisting of:

- Powder coated steel frame
- Four castors (two of which can be locked)
- Four support points for securing the bath
- Stainless steel storage shelf

## TECHNICAL SPECIFICATIONS

| Packheater / model                             | WB 4-30                     | WB 6-50                     | WB 8-90                     | WB 16-130                   |
|------------------------------------------------|-----------------------------|-----------------------------|-----------------------------|-----------------------------|
| Tank capacity                                  | 30 liter                    | 47 liter                    | 82 liter                    | 99 liter                    |
| Number of bars (insert grid)                   | -                           | 3                           | 4                           | 7                           |
| Number of (optional) packs possible (25x30 cm) | 5                           | 8                           | 12                          | 18                          |
| Gas spring supported lid                       | -                           | Yes                         | Yes                         | Yes                         |
| Power supply                                   | 220-240V, 50/60Hz           | 220-240V, 50/60Hz           | 220-240V, 50/60Hz           | 220-240V, 50/60Hz           |
| Heating capacity                               | 900 W                       | 1500 W                      | 1500 W                      | 1500 W                      |
| Temperature range                              | 30 – 85 °C                  | 30 – 85 °C                  | 30 – 85 °C                  | 30 – 85 °C                  |
| Accuracy (temp. setting)                       | 5 K                         | 0,1 K                       | 0,1 K                       | 0,1 K                       |
| Temperature control                            | thermostatic                | electronic                  | electronic                  | electronic                  |
| Control accuracy                               | ± 5,0 K                     | ± 2,0 K                     | ± 2,0 K                     | ± 2,0 K                     |
| Digital temperature display                    | -                           | Yes                         | Yes                         | Yes                         |
| Thermal cut-out (safety)                       | 95 °C                       | 95 °C                       | 95 °C                       | 95 °C                       |
| External dimensions (lxwxh)                    | 575x365x370 mm              | 675x470x385 mm              | 725x470x490 mm              | 775x490x515 mm              |
| Internal dimensions (lxwxh)                    | 500x300x200 mm              | 590x400x200 mm              | 645x400x320 mm              | 695x420x340 mm              |
| Net weight                                     | 12,0 kg                     | 23,2 kg                     | 28,8 kg                     | 30,3 kg                     |
| Shipping weight                                | 15 kg                       | 25,5 kg                     | 45 kg                       | 50 kg                       |
| Cross section of power cable                   | 3 x 1 mm <sup>2</sup>       | 3 x 1 mm <sup>2</sup>       | 3 x 1 mm <sup>2</sup>       | 3 x 1 mm <sup>2</sup>       |
| Device fuses<br>(IEC 60127-2/4 • DIN VDE 0820) | 6,3x32 5,0 A<br>fast acting | 6,3x32 8,0 A<br>fast acting | 6,3x32 8,0 A<br>fast acting | 6,3x32 8,0 A<br>fast acting |
| Medical Device Class                           | Class I                     | Class I                     | Class I                     | Class I                     |

## ORDERING DATA

|         |                                               |         |                            |
|---------|-----------------------------------------------|---------|----------------------------|
| 3448401 | Packheater WB 4-30 (30 l) 220-240V, 50/60Hz   | 3448421 | Mobile frame for WB 4-30   |
| 3448402 | Packheater WB 6-50 (47 l) 220-240V, 50/60Hz   | 3448422 | Mobile frame for WB 6-50   |
| 3448403 | Packheater WB 8-90 (82 l) 220-240V, 50/60Hz   | 3448423 | Mobile frame for WB 8-90   |
| 3448404 | Packheater WB 16-130 (99 l) 220-240V, 50/60Hz | 3448424 | Mobile frame for WB 16-130 |

## OPTIONAL ACCESSORIES



**ENRAF-NONIUS B.V.**  
Vareseweg 127  
3047 AT Rotterdam  
The Netherlands  
T.: +31-(0)10 - 203 06 00  
E: info@enraf-nonius.nl  
www.enraf-nonius.com

For a complete overview of available hot packs (optional accessories), please visit [www.enraf-nonius.com](http://www.enraf-nonius.com)



# CHILLING UNITS

Mobile quick-chiller to bring cold packs to the ideal temperature for use and to make sure they stay that way all day long. The specially designed chilling elements guarantee a rapid chilling. Easily moved on the 7½ cm rubber wheels.



## 3448274 CHILLING UNIT MODEL C-5

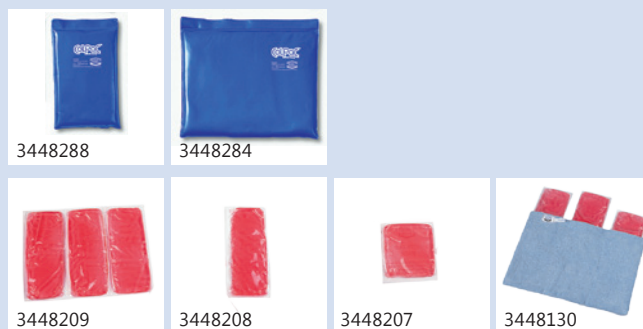
### STANDARD ACCESSORIES

|         |                    |
|---------|--------------------|
| 1468751 | Operating manual   |
| 3448284 | 6x Colpac 28x36 cm |
| 3448288 | 6x Colpac 16x28 cm |



### OPTIONAL ACCESSORIES

|         |                                      |
|---------|--------------------------------------|
| 3448288 | Colpac 16x28 cm                      |
| 3448284 | Colpac 28x36 cm                      |
| 3448209 | Hot/Cold packs 30x38 cm, 2 pieces    |
| 3448208 | Hot/Cold packs 13x30 cm, 6 pieces.   |
| 3448207 | Hot/Cold packs 13x14 cm, 12 pieces   |
| 3448130 | Towelling holder for 3 packs 3448208 |



### TECHNICAL SPECIFICATIONS

|                               |                                                    |
|-------------------------------|----------------------------------------------------|
| Mains voltage:                | 220-240 V, 50 Hz                                   |
| Current:                      | 2 A                                                |
| Work:                         | 0.14914 kWh of 1/5 hp                              |
| Type of refrigerant:          | R-134A:                                            |
| Amount of refrigerant:        | 0,325L                                             |
| Testpressure:                 | high 1.62 MPa (235 psi);<br>low 1.03 MPa (150 psi) |
| Normal operating temperature: | -12°C tot -6°C                                     |
| Dimensions (hwxwb):           | 84 x 41 x 69 cm                                    |
| Weight:                       | 74 kg                                              |

# HALOGEN INFRARED SPOTS



model IRS 2



model IRS

For many years, Infrared Radiators have been a well-known accessory in the field of thermotherapy. Infra-red thermotherapy is often used for the reduction of pain as well as for general healing of wounds. The skin absorbs the heat and passes it through to the blood stream in a natural way.

The IRS Halogen Infrared Spots form a new generation of radiators for heat treatment (infrared thermotherapy).

Two versions of the IRS are available:

- IRS (600W / 3x200W halogen)
- IRS 2 (400W / 2x200W halogen)

## Major advantages of the IRS halogen radiators

- *Safety* - the infrared radiators IRS and IRS 2 are the only two radiators which have been tested and approved for photobiological safety. This means that there is no danger for the eyesight;
- *Energy efficiency* - the halogen radiator IRS and IRS 2 consume 30% less power than IR-radiators, that are equipped with conventional light bulbs (while delivering the same amount of infrared energy);
- *Patient comfort* - conventional infrared radiators generate a 'burning sensation' on the skin because the emitted light component is very large. By combining the halogen tube with a special filter, the proportion of light in the IRS radiators is reduced which avoids such 'burning sensations'.

IRS Halogen radiators must be connected to a (mobile) support system since the power supply is built into the stand. These (optional) stands must be ordered separately.

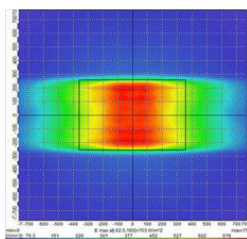
## Model IRS (600W)

The Halogen Infrared Spot IRS combines modern design with functionality and efficiency. With a capacity of 600 Watt (3x200W) it produces the equivalent light output as a 900 Watt infrared spot equipped with conventional light bulbs.

The specially designed reflectors of the Halogen Infrared Spot IRS spread the radiation wide and evenly on the patient's body.

In combination with the stand SST / SSU / SSV, the Halogen Infrared Spot IRS builds a functional entity that matches the current state of the art and stands out by its straight-line design.

# HALOGEN INFRARED SPOTS



## Features

- Powder-coated aluminium / sheet steel housing
- Housing colour: white / black
- 3 halogen lamps (200W each), emitting infrared radiation in a therapeutically effective range
- 3 reflectors, spreading the radiation wide and evenly
- Complies with the photo-biological safety standard (DIN EN 62471)
- Electronic timer with repeat-function
- Protection grid to avoid burns
- Main switch with power indicator
- Mountable to mobile stand SST / SSU / SSV (optional)
- Mountable to wall arm HWA (optional)

## model IRS 2 (400W)

The IRS 2 is an economic halogen spot and is based on the same attractive design and the same technology as the larger version IRS.

The IRS 2 has a simplified control unit and is equipped with 2 halogen lamps (200W each) and 2 reflectors.

With a capacity of just 400W the IRS 2 produces the same light output as a 600 Watt spot equipped with conventional light bulbs.

Its compact outside dimensions and its complete functionality make the Infrared spot IRS 2 a modern and practical device.

## TECHNICAL SPECIFICATIONS

|                               | IRS 2                                                       | IRS                                                         |
|-------------------------------|-------------------------------------------------------------|-------------------------------------------------------------|
| Power supply *                | 220-240V, 50/60Hz                                           | 220-240V, 50/60Hz                                           |
| Number of lamps               | 2                                                           | 3                                                           |
| Heating capacity per lamp     | 200 W                                                       | 200 W                                                       |
| Max. heating capacity         | 400 W                                                       | 600 W                                                       |
| Lamps individually switchable | No                                                          | Yes                                                         |
| Timer                         | Max. 60 min.                                                | Max. 99 min.                                                |
| Device fuses                  | 6,3x32 fast acting<br>5,0 A<br>IEC 60127-2/4 • DIN VDE 0820 | 6,3x32 fast acting<br>5,0 A<br>IEC 60127-2/4 • DIN VDE 0820 |
| Overall dimensions (LxWxH)    | 555 x 365 x 145 mm                                          | 700 x 395 x 145 mm                                          |
| Net weight                    | 11,6 kg                                                     | 12,0 kg                                                     |
| Shipping weight               | 13,5 kg                                                     | 14,5 kg                                                     |
| Packing dimensions (LxWxH)    | 815 x 500 x 500 mm                                          | 815 x 500 x 500 mm                                          |
| Medical Device Class          | Class IIa                                                   | Class IIa                                                   |

\* = power supplied via the support system (optional)

## ORDERING DATA

|         |                                                      |
|---------|------------------------------------------------------|
| 3441803 | Halogen IR-radiator IRS-2 (400W), 220-240V, 50/60Hz* |
| 3441804 | Halogen IR-radiator IRS (600W), 220-240V, 50/60Hz*   |

\* without stand and without mains cable. Please order separately!

## OPTIONAL ACCESSORIES

|         |                                                  |
|---------|--------------------------------------------------|
| 3441821 | Mobile stand SST (T-base), including mains cable |
| 3441822 | Mobile stand SSU (U-base), including mains cable |
| 3441823 | Mobile stand SSV (V-base), including mains cable |
| 3441824 | Wall arm HWA, including mains cable              |

# INFRARED RADIATORS (MODEL TGS)



## TGS 6.2 (900 W)

### Features

- Powder-coated aluminium / sheet steel housing
- Housing colour: white
- Handle bar colours: red, blue, green, yellow or black
- Electronic timer (treatment time max. 60 min.)
- 6 therapeutic IR-lamps (Philips Infrared PAR 38, 150W)
- Each bulb can be switched ON/OFF individually
- Protection grid to avoid burns
- Main switch with power indicator
- Mountable to mobile stand SST / SSU / SSV (optional)
- Mountable to wall arm HWA (optional)

The traditional TGS Infrared radiators are used for heat treatment (infrared thermotherapy) in physiotherapy.

Two versions of the TGS are available:

- TGS 6.2 (900W / 6x150W infrared)
- TGS 3.2 (450W / 3x150W infrared)

The TGS infrared radiators must be connected to a (mobile) support system since the power supply is built into the stand. These (optional) stands must be ordered separately.

## TGS 3.2 (450 W)

### Features

- Powder-coated aluminium / sheet steel housing
- Housing colour: white
- Handle bar colours: red, blue, green, yellow or black
- Electronic timer (treatment time max. 60 min.)
- 3 therapeutic IR-lamps (Philips Infrared PAR 38, 150W)
- Each bulb can be switched ON/OFF individually
- Protection grid to avoid burns
- Main switch with power indicator
- Mountable to mobile stand SST / SSU / SSV (optional)
- Mountable to wall arm HWA (optional)





# INFRARED RADIATORS (MODEL TGS)

## TECHNICAL SPECIFICATIONS

|                                 |                    |                    |
|---------------------------------|--------------------|--------------------|
| Infrared radiator / model       | TGS 3.2            | TGS 6.2            |
| Power supply *                  | 220-240V, 50/60Hz  | 220-240V, 50/60Hz  |
| Number of lamps                 | 3                  | 6                  |
| Heating capacity per light bulb | 150 W              | 150 W              |
| Max. heating capacity           | 450 W              | 900 W              |
| Lamps individually switchable   | Yes                | Yes                |
| Timer                           | Max. 60 min        | Max. 60 min        |
| Device fuses                    | 6,3x32 5 A         | 6,3x32 5 A         |
| IEC 60127-2/4 DIN VDE 820       | fast acting        | fast acting        |
| Overall dimensions (LxWxH)      | 710 x 330 x 160 mm | 710 x 490 x 160 mm |
| Net weight                      | 10,4 kg            | 9,8 kg             |
| Shipping weight                 | 13 kg              | 13,3 kg            |
| Packing dimensions (LxWxH)      | 820 x 480 x 465 mm | 820 x 620 x 465 mm |
| Medical Device Class            | Class IIa          | Class IIa          |

\* power supplied via the support system (optional)

## ORDERING DATA

|         |                                                |
|---------|------------------------------------------------|
| 3441801 | IR-radiator TGS 3.2 (450W), 220-240V, 50/60 Hz |
| 3441802 | IR-radiator TGS 6.2 (900W), 220-240V, 50/60 Hz |

## OPTIONAL ACCESSORIES

|         |                                                  |
|---------|--------------------------------------------------|
| 3441821 | Mobile stand SST (T-base), including mains cable |
| 3441822 | Mobile stand SSU (U-base), including mains cable |
| 3441823 | Mobile stand SSV (V-base), including mains cable |
| 3441824 | Wall arm HWA, including mains cable              |





# MOBILE STAND SST / SSU / SSV & WALL ARM HWA



Mobile stand – model SST



Mobile stand – model SSU



Mobile stand – model SSV

The following (optional) support systems (including mains cable) are available for the IR-radiators model IRS and TGS:

- Mobile stands SST / SSU / SSV
- Wall arm HWA

## Main features mobile stands

- Powder-coated steel frame
- Frame colour white/black (other colour combinations at extra charge)
- 4 rotating castors with parking brake
- Stepless height-adjustment from 164 to 204 cm (top edge stand)
- Lifting support with gas spring
- Front height of stand base: 60 mm (SST) or 65 mm (SSU and SSV); fits under most treatment couches
- Connector for infrared spots with Ondal-coupling (such as IRS / IRS 2 / TGS 3.2 / TGS 6.2)
- Available as T-base, U-base or V-base



**ENRAF-NONIUS B.V.**  
Vareseweg 127  
3047 AT Rotterdam  
The Netherlands  
T.: +31-(0)10 - 203 06 00  
E: info@enraf-nonius.nl  
www.enraf-nonius.com

## TECHNICAL DATA

| Support system                   | SST                   | SSU     | SSV     |
|----------------------------------|-----------------------|---------|---------|
| <b>Ordering data</b>             | 3441821               | 3441822 | 3441823 |
| Length                           | 820 mm                | 800 mm  | 810 mm  |
| Front width                      | 780 mm                | 800 mm  | 820 mm  |
| Rear width                       | 570 mm                | 800 mm  | 560 mm  |
| Minimum height                   | 1640 mm               | 1640 mm | 1640 mm |
| Maximum height                   | 2040 mm               | 2040 mm | 2040 mm |
| Height of stand base (front)     | 60 mm                 | 65 mm   | 65 mm   |
| Nominal Voltage                  | 220-240 V             |         |         |
| Power frequency                  | 50/60 Hz              |         |         |
| Cross section of the power cable | 3 x 1 mm <sup>2</sup> |         |         |
| Packing dimensions (L x W x H)   | 165 x 29,5 x 16 cm    |         |         |
| Net weight                       | 17,7 kg               | 17,8 kg | 18,5 kg |
| Packing - gross weight           | 21,5 kg               | 21,5 kg | 21,5 kg |

| Wall arm                              | HWA                   |
|---------------------------------------|-----------------------|
| <b>Ordering data</b>                  | 3441824               |
| Net weight                            | 8,5 kg                |
| Shipping weight                       | 10 kg                 |
| Load range                            | 8-13 kg               |
| Radius of action                      | 1550 mm               |
| Maximum angle of inclination way up   | 35 °                  |
| Maximum angle of inclination way down | 55 °                  |
| Nominal voltage                       | 220-240 V             |
| Power frequency                       | 50/60 Hz              |
| Cross section of the power cable      | 3 x 1 mm <sup>2</sup> |



3441824



T-BASE



U-BASE



V-BASE