

ABPM

Product Information

The Dialog⁺/ Dialog Advanced dialysis machine can be equipped with an automatic blood pressure measurement (ABPM) function. ABPM non-invasively monitors blood pressure by the oscillometric method. ABPM – your "Monitoring Assistant" – makes vital sign monitoring easier and gives you more time to attend to your patients. ABPM produces extremely precise and reliable readings. Your "Monitoring Assistant" automatically adapts cuff inflation pressure and alarm limits to each patient and blood pressure.

Benefits:

- Easy BP measurement at all times – before, during and after dialysis
- Automatic readings at regular intervals
- BP and pulse rate are clearly displayed on the main screen
- Alarm limits can be individually adapted to patient's blood pressure
- Selectable color display for blood pressure and pulse curves
- Real-time documentation of all readings
- Automatic cuff inflation adjustment

Technical data:

Blood pressure measurement range

| | |
|-----------------|------------------|
| Systole (SYS): | 45 – 280 mmHg |
| Diastole (DIA): | 15 – 220 mmHg |
| MAP: | 25 – 240 mmHg |
| Accuracy: | ± 3 mmHg or ± 2% |

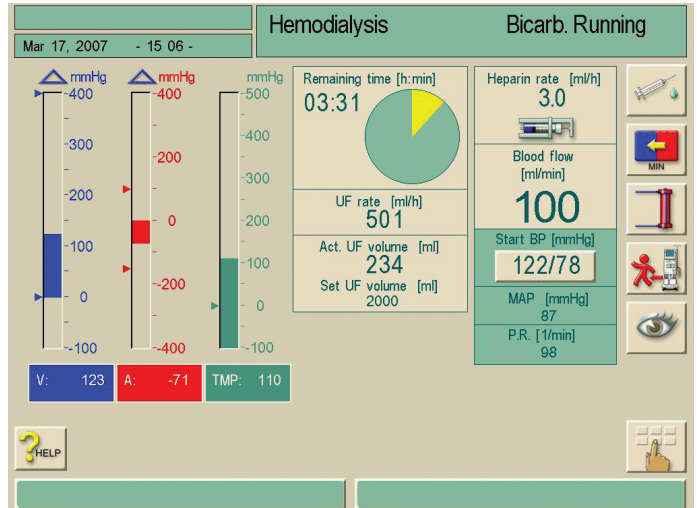
Individual setting of limits

| | |
|--------------------------------|--|
| Alarm limits: | ± 30 mmHg around the last measured value |
| In critical range: | ± 20 mmHg around the last measured value |
| Measuring time: | ca. 28 s (adult with blood pressure of 120/80 mmHg and 80 BPM) |
| Cuff pressure range: | 0 – 300 mmHg |
| Default target cuff inflation: | 200 mmHg |
| Following cuff inflation: | last SYS + 30 mmHg |
| Overpressure cut off: | 300 mmHg + 10 % |
| Pulse rate determination: | 30 – 240 BPM |
| Pulse rate accuracy: | ± 2 % or 2 BPM |

| Machine | Option | Article number |
|---------------------|-------------|----------------|
| Dialog Advanced | Option ABPM | 7109226 |
| Dialog ⁺ | Option ABPM | 7105226 |

| Cuffs latex free | Article number |
|------------------|----------------|
| small | 7102372 |
| medium | 7102771 |
| large | 7102380 |

Therapy mode main screen



Graphical display of BP Values

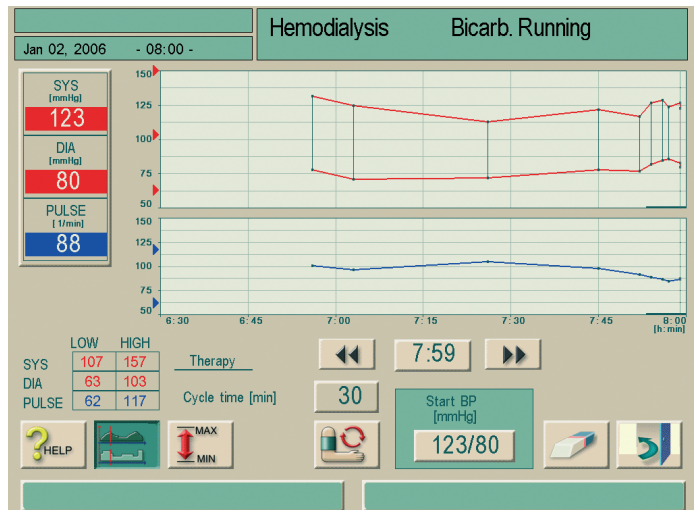


Table of BP Values

Hemodialysis Bicarb. Running

Jan 02, 2006 - 08 01 -

| Time [h : min] | Systolic [mmHg] | Diastolic [mmHg] | MAP [mmHg] | Pulse rate [1/min] |
|----------------|-----------------|------------------|------------|--------------------|
| 07 : 59 | 123 | 80 | 99 | 88 |
| * 07 : 59 | 127 | 83 | 98 | 87 |
| * 07 : 57 | 124 | 86 | 101 | 85 |
| * 07 : 56 | 129 | 85 | 101 | 87 |
| * 07 : 55 | --- | --- | --- | --- |
| 07 : 54 | 127 | 82 | 102 | 89 |

Cycle time [min] 30

Start BP [mmHg] 123/80

? HELP

B | BRAUN
SHARING EXPERTISE

B. Braun Avitum AG

Schwarzenberger Weg 73-79
34212 Melsungen
Germany
Tel +49 (56 61) 71-2624
Fax +49 (56 61) 75-2624

e-mail: dialysis@bbraun.com
www.bbraun-dialysis.com